

Shuttle Valve

● Character

It is similar to the combination of two one-way valves with two input and one output. In the pneumatic system, it acts as OR of logic in both executive loop and control loop.



● KV-06

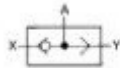


● KV-08



● KV-10

■ Graphics Sign



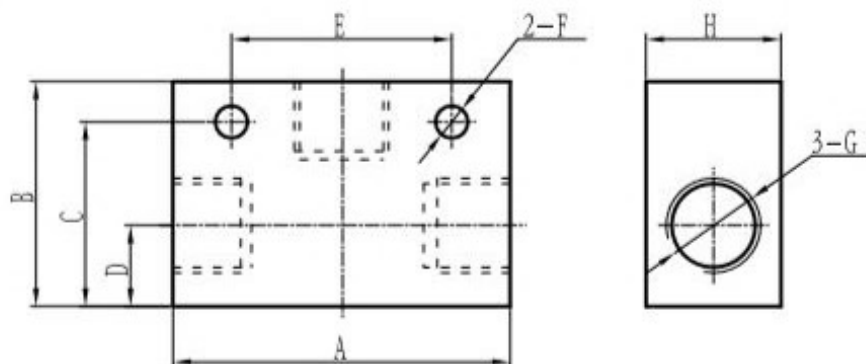
● Ordering Code



■ Technical Parameter

Item Specification	Pipe Size	Nominal Diameter (mm)	Applicable Medium	Applicable Pressure Range	Min. Operating Pressure	Medium Temperature
KV-06	G1/8	3	Air	0.05 - 1.2 MPa	≥ 0.05MPa	-5 - 60°C
KV-08	G1/4	6				
KV-10	G3/8	8				
KV-15	G1/2	10				
KV-20	G3/4	15				
KV-25	G1	20				

■ Figure Dimension



Specification	A	B	C	D	E	F	G	H
KV-06	40	26	21	8	25	φ 4.3	G1/8	16
KV-08	52	35	25	11	35	φ 5.5	G1/4	22
KV-10	70	50	41	18	48	φ 7	G3/8	30
KV-15	75	50	41	18	48	φ 7	G1/2	30
KV-20	110	70	58	22	72	φ 7	G3/4	40
KV-25	110	70	58	22	72	φ 7	G1	40